

# eyesoft

## Professional Network IP Surveillance Software



4 to 64 channels per server  
Supports most major IP cameras  
Supports analogue capture cards  
MJPEG, JPEG, MPEG4, H.264  
Remote access & streaming  
Features Video Analytics  
E-Map, POS, Spot Monitor  
Multi Monitor Support

Windows XP / Vista / 2003 / 2008

### Hybrid IP CCTV Software

Compatible with multi vendor IP cameras to analogue & USB cameras, video capture cards, IPTV streams & Megapixel IP cameras up to 1920x1080p. Easy to use & manage yet powerful & fully featured

### Fully Featured

Multi camera live monitoring & playback via multiple monitor options, virtual matrix operation, e-map function, remote access via client license, web browser or Windows Media Player, Easy video and image export to advanced video analytics

### More Features

Up to 64ch split screen view, add name tags to video for fast search, time line & calendar search, support PTZ, audio, MegaPixel, multiple monitors, alarm alerts, system log, virtual matrix, OSD time stamp, region mask, dual stream, external audio, drag & drop windows, multi site / license support, video cycle / overwrite, & more

### Large & Small Business to Home

4 to 64 channel versions for use in home & SME to large enterprise offering a stable feature rich surveillance system designed with the future in mind with cross compatibility for ease of use & function



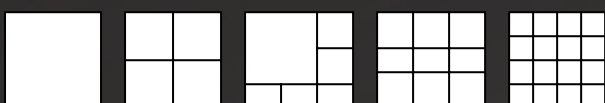
No per camera license fees  
Free software version upgrades  
Lower cost of ownership  
Unique user friendly interface  
Simple to use & setup

\*\* video analytics on 64ch / complete version only



### Requirements

Windows XP / Vista / 2003 /2008 Pentium 4  
2.0Ghz, 512MB RAM (min) 128MB video memory,  
10GB disk space Microsoft DirectX 9.0c .Net  
Framework 3.0 Recommend: P4 2.8Ghz + or Dual  
Core, 2GB RAM, 256MB+ Video, Win XP



1, 4, 6, 9, 13, 16, 32, 64ch split screen views  
Multi Window Live View & Playback  
Floating Panels, Drag & Drop Windows  
Remote Access

### Video Analytics

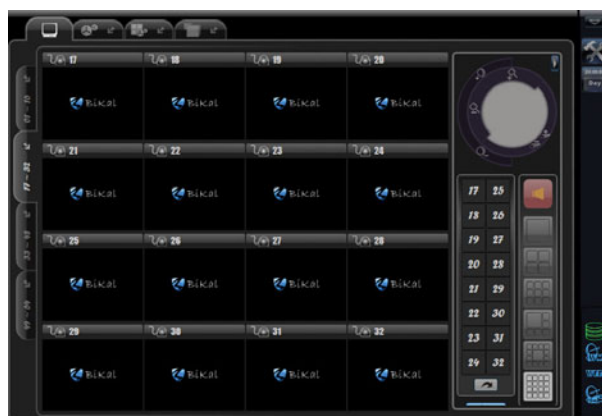
Motion detection, object moving in or out of  
region, enter or leave, loitering, objects  
congregating, illegally stopped objects, object  
cross line, object counter, counter graph, pos,  
fraud alert. 64ch / complete version only

### Compatible Sources

USB Webcams, BT8x8 video capture cards, BiKal  
Elite IP Camera range, IPTV, Windows Media  
Streams, WVC1, MPEG video files & IP Cameras  
from manufacturers;

4XEM, Acti, Axis, Airlink, A-Linking, Avermedia,  
Aviosys, Aventura, AVTECH, Arecont, Canon,  
Creative Live, BiKal Elite, D-Link, Eltis, Flexwatch,  
Gadspot, Grandtec, Hawking, HikVision, Hunt,  
Intellinet, IPS, IQeye, I-Watcher, JVC, Kingwave,  
Lenovo, LevelOne, Levo, Lindy, Linksys, Mobi,  
Mobotix, Orite, Panasonic, Pixord, Planet, RF Link,  
Samsung, Soho, Sony, Sparklan, Stardot, Swann,  
Toshiba, Trendnet, Trust, VCenter, Vivotek,  
Xannet

Please see [www.bikal.co.uk](http://www.bikal.co.uk) for complete  
compatibility list.



Main Interface Screenshot

- 4, 8, 16, 32, 64 channel versions
- Supports Windows XP & Vista 32/64bit
- Supports multi - vendor IP cameras
- Supports analogue video capture
- Supports USB webcam & IPTV
- Motion detection, alarm, alerts
- Video Analytics, POS, Object Counter
- Video pop-up on alarm
- JPEG, MJPEG, MPEG4, H.264, ASF
- Remote access via IE web browser
- Broadcast live Windows Media Stream
- Supports HD 1920x1080p, up to 60fps
- Multi monitor virtual matrix support
- Multi camera playback
- Same time live & recorded view
- Video tag, timeline, calendar search
- Pelco D/P PTZ support
- Multichannel audio support
- Supports /3GB, IncreaseUserVA switch
- Multi user level password access